

SOCIETAL IMPACT OF DRUGS: Human Rights

By:

Prof. Calvin Fay

Executive Director

Drug Free America Foundation, Inc.

San Jose, Costa Rica



What is meant by the term “drugs?”

- Chemical substances that have mood-altering effects, including alcohol.



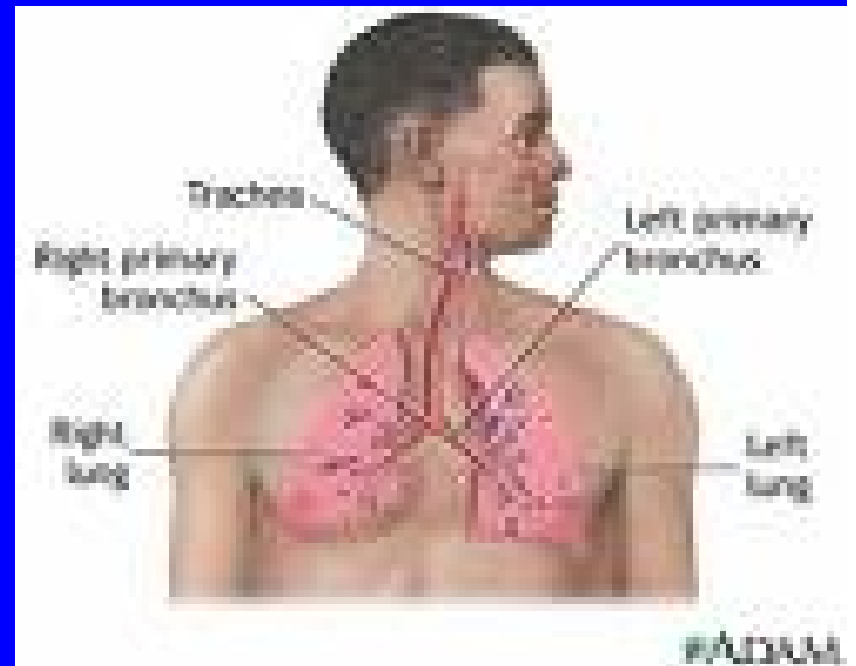
What are some of the impacts of drugs on society?

- The **overall** societal cost of alcohol and other drug abuse to society in 2005 was estimated to be over \$44 billion in California alone. (ONDCP)
- The **healthcare** costs for the U.S. attributable to illegal drug abuse alone were estimated in 2002 to be \$52 billion. (ONDCP)
- According to a 1999 article in the Washington Post, one report from Brazil estimates the cost of **medical care** for drug addiction soared from \$902 million 1993 to \$2.9 billion in 1997.

Increased healthcare issues

- Respiratory
 - Decreased Diffusion
 - Cellular Inflammation
 - Precancerous Changes
 - Diminished Lung Immunity

The Marijuana Movement: A Peek into Pandora's Box, Eric Voth, M.D., FACP, Chair, Institute on Global Drug Policy



Increased healthcare issues

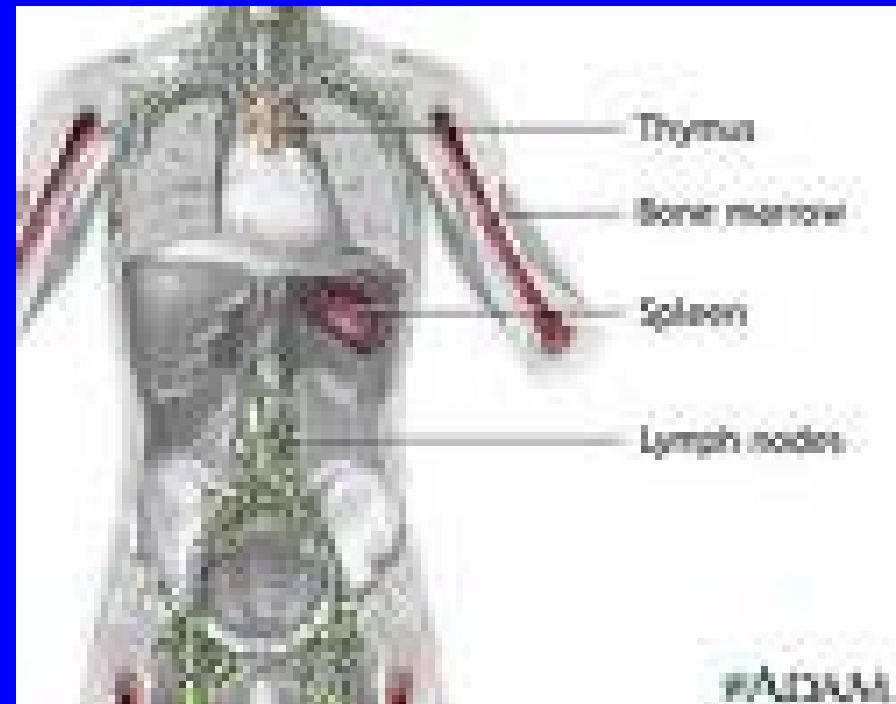
- Mental illness
 - Impairment of “Executive Functions” such as Perseveration, Attention, Learning Lists



POPE- JAMA 1996;275:521-7

Increased healthcare issues

- Impairment to immune system
 - Impaired Killing of Legionella
KLEIN 1993
 - Impaired Function of Alveolar Macrophages-
CABRAL-1992
 - Reduced NKT cells-
SPECTER 1986



Increased healthcare issues

- Damage to the newborn
 - Birth weight
 - Length
 - Head Circumference
 - Abnormal Development
 - Neurological Irritability



The Marijuana Movement: A Peek into Pandora's Box, Eric Voth, M.D., FACP, Chair, Institute on Global Drug Policy

Increased healthcare issues

- Infant intelligence
- Negative effect on Intelligence parameters of 3 Year-olds after use in second and third trimesters

DAY-NEUROTOX AND
TERATOLOGY
1994;16:169-75



Increased healthcare issues

- Infant sleep disruption
 - Abnormal sleep disruption of 3 year-olds after prenatal exposure

DAHL-ARCH PED AND ADOLES MED
1995;145-50



Increased healthcare issues

- Infant cognitive changes
 - Increased behavioral problems, language comprehension, sustained memory, and memory at age 4.

FRIED-LIFE SCIENCES

• 1995;56:2159-68



Increased healthcare issues

- 10-year old behavior
- Inattention
- Delinquency
- Hyperactivity

Goldschmidt L, Day NL,
Richardson GA.

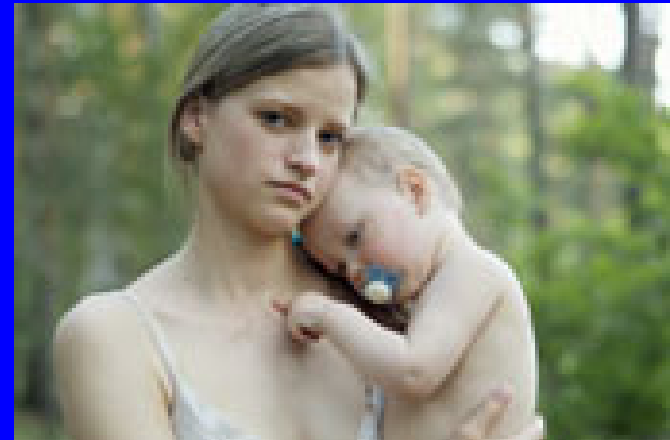
Neurotoxicology and Teratology
2000;22:325-336



Increased healthcare issues

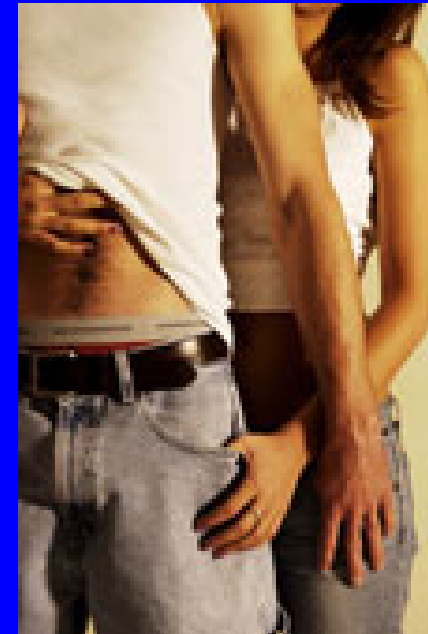
- Unplanned pregnancies
 - In the U.S.:
 - 468,988 babies are born to teenage mothers each year
 - 820,000 woman smoke cigarettes while pregnant
 - 221,000 women use illicit drugs during pregnancy
 - 757,000 woman drink alcohol while pregnant

American Pregnancy Association
(www.americanpregnancy.org)



Increased healthcare issues

- Increase in transmittable diseases



Centers for Disease Control and Prevention. (2000, November; updated 2001, January). Sexually transmitted diseases. In *Healthy People 2010: Volume II: Objectives for improving health (Part B, Focus Area 25)* (2nd ed.).

Marx, R., Aral, S. O., Rolfs, R. T., Sterk, C. E., & Kahn, J. G. (1991). Crack, sex, and STD. *Sexually Transmitted Diseases* 18, 92-101.

Increased healthcare issues

- Increase in emergency room visits
 - 9 people accounted for 2,678 of ER visits in Austin, TX during past 6 years at a cost of \$3 million to taxpayers & others
 - 8 of the 9 have drug abuse problems, 7 had mental health issues, 3 were homeless

St. Petersburg Times
4/2/09



Increased healthcare issues

- Premature deaths



Impaired learning and development

- School dropout



G. Nahas, K. Sutin, D. Harvey, S. Agurell, Marijuana and Medicine Human Press,
Totowa, NJ 1999, 25

Impaired learning and development

- Under-employment or unemployment



Safety issues

- Cognitive issues

The COGNITIVE BEHAVIORAL Sequence

EVENTS → THOUGHTS → BEHAVIOR

↳ Emotions ↗

This is the stuff that happens as you experience daily life.

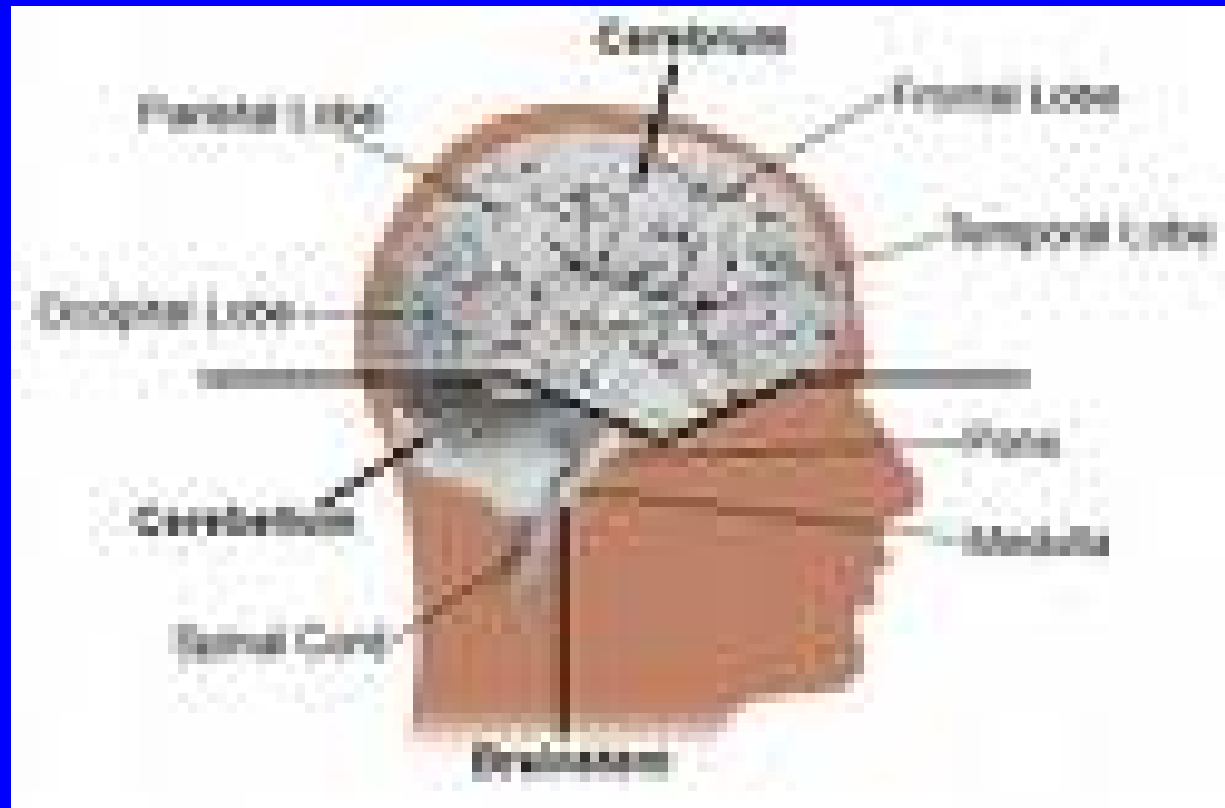
Senses input to brain, also uses memory (learned experience) and decides response.

What the brain has decided as the best response for the event

When the brain records memory it includes any emotions experienced.

Safety issues

- Memory



Safety issues

- **Driving effects** -“there can be no doubt that marijuana use impedes driving performance, and that the effect of combining with alcohol is more dramatic.”



Jolly, BT NHTSA Notes Commentary
Annals of Emergency Medicine 2000;35:399

Safety issues

- Behavior

Higher Incidence of unemployment and violent behavior associated with Marijuana use. New Zealand

POULTON- NZ MED J

1997;110:68-70



Safety issues

- Behavior

Marijuana use associated with weapons offenses, attempted homicide, reckless endangerment, and selling drugs.

Friedman AS, Glassman K, Terras.
Journal of Addictive Diseases
2001;20:49-70



Safety issues

- Behavior

- 6 times as many homicides are committed by persons under the influence of drugs than those looking for money to buy drugs
- Most arrestees for violent crimes test positive for drugs at the time of their arrest.
 - 82% in NY City (Drug Related Crime, ONDCP)



U.S. Drug Enforcement
Administration

Safety issues

- Ability to be employed
- Those smoking marijuana had 15 percent lower scores in math than non-smokers. That lower math score could result in a salary 2 percent lower later in life.

Economist Rosalie Pacula
public policy group RAND
Reuters
June 19, 2003 RAND



Gateway effect

- Drug use is contagious and worsens if allowed to continue
 - Risk spans entire course of adolescent development.
 - Young people exposed to other users are at higher risk for early initiation.
 - Clear family standards and proactive family management are important in delaying alcohol and marijuana use.



Kosterman R, Hawkins JD, Guo J,
Catalano RF, Abbott RD.

Social services

- Child neglect – 81% in U.S.

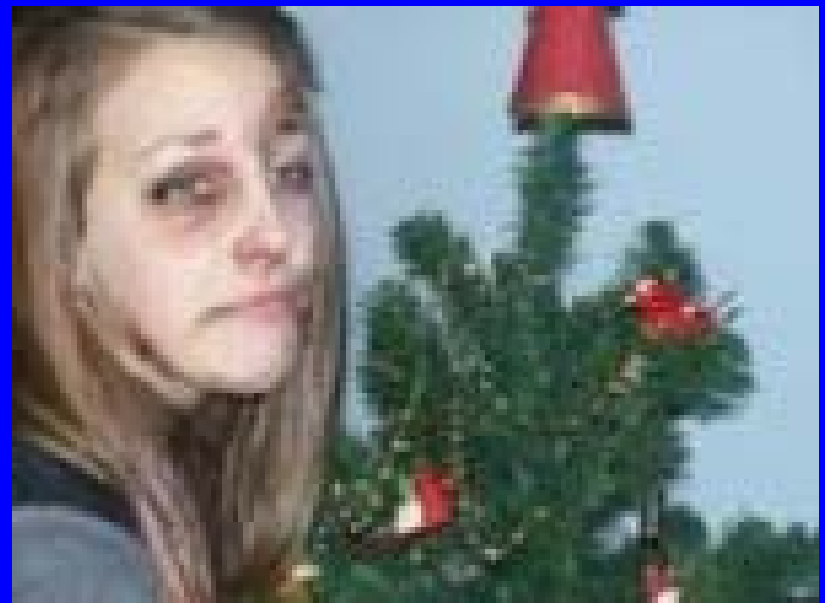


Lung, C. T. and D. Daro. 1996. *Current trends in child abuse reporting and fatalities: The results of the 1995 annual fifty state survey*. Chicago, Illinois: National Committee to Prevent Child Abuse.

Social services

- Domestic abuse
 - 70% in U.S. is drug/alcohol related

The Alvarado Post, 9/1/06



Social services

- Foster care and orphanages
 - 75% in U.S. is drug/alcohol related



National Survey of Drug Use and Health

Social services

- Homeless shelters



S. W. Hwang, Homelessness and Health, CMAJ, 2001

Social services

- Sexual abuse – pedophilia - incest

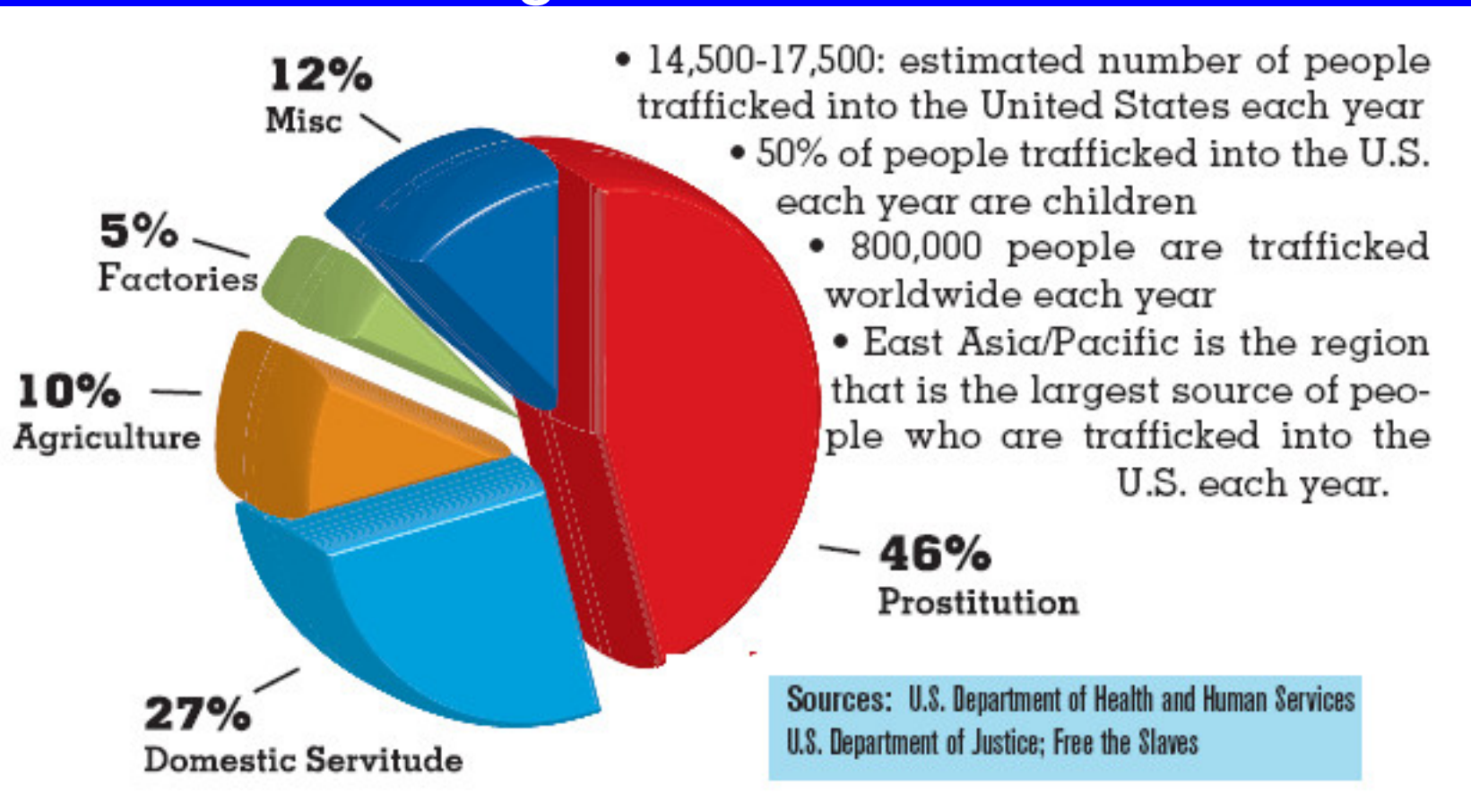
➤ Approximately 72% of rapes reported on U.S. college campuses occur when victims are so intoxicated they are unable to consent or refuse” (*Journal of Studies on Alcohol*, H. Wecshler, 2004

▪ In 1998, an estimated 400,000 U.S. college students between the ages of 18 to 24 had unprotected sex after drinking, and an estimated 100,000 had sex when they were so intoxicated they were unable to consent. (*Journal of Studies on Alcohol*, R. Hingson, 2002).



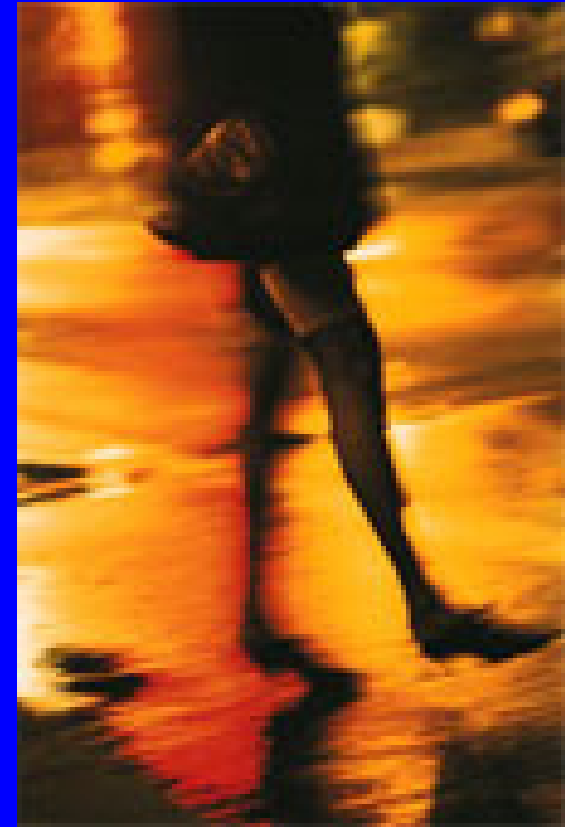
Other societal impact

- Human trafficking



Other societal impact

- Prostitution



Pathways to Prostitution: The Chronology of Sexual and Drug Abuse Milestones, Health Care Industry, 1998

Other societal impact

- Weapons trafficking



Combating Illicit Light Weapons Trafficking: Developments and Opportunities, The British American Security Information Council, 1998

What percentage of your community is impacted by and/or uses drugs?

- Less than 5% of the world's population (age 15-64) used illicit drugs in the last year
- Problem drug users are estimated to be about .6% - less than 1%

(2008 World Drug Report, UNODC)



Whose rights need to be protected?

- Law-abiding families?
- Youth experimenting with drugs?
- Criminal drug dealers?



How do we protect those rights?

- Comprehensive policy of:
 - prevention,
 - treatment, and
 - law enforcement and interdiction



How do we protect those rights?

- Comprehensive policy of prevention, treatment, and law enforcement and interdiction
 - Education to prevent or stop drug use
 - Parent groups
 - D.A.R.E. – Drug Abuse Resistance Education (www.dare.com)
 - Lions Quest (www.lions-quest.org)



How do we protect those rights?

- Comprehensive policy of prevention, treatment, and law enforcement and interdiction
 - Effective treatment based upon proven approaches that restore sobriety
 - in-patient
 - out-patient
 - therapeutic communities (www.sanpatrignano.org)
 - aftercare programs (www.aa.org)



How do we protect those rights?

- Comprehensive policy of prevention, treatment, and law enforcement and interdiction
 - Humane but effective enforcement of laws against illicit drug use and trafficking and misuse of licit drugs
 - Drug courts (www.nadcp.org)
 - H.O.P.E. - Hawaii's Opportunity Probation with Enforcement (www.courts.state.hi.us)



How do we protect those rights?

- Comprehensive policy of prevention, treatment, and law enforcement and interdiction
 - Interdiction of drugs
 - Enforcement of laws



Mutual respect and protection of human dignity

